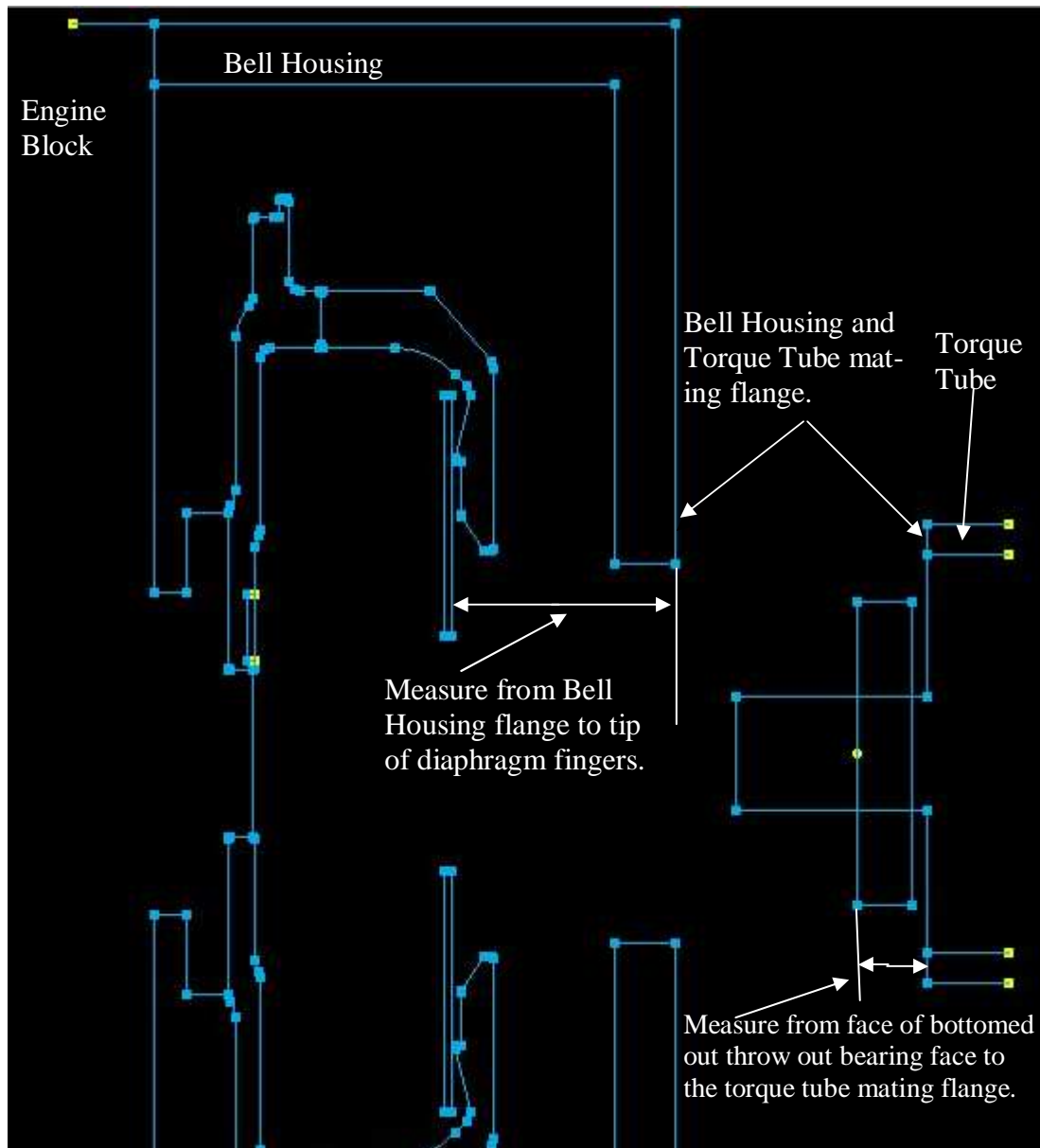


RPS FINGER HEIGHT CHECK



In order for RPS clutches to work their best and last their longest in all LSX applications it is important that the installed throw-out bearing clearance to clutch finger height is verified. This clearance should be no less than .275" and no more than .375".

As you can see from the above diagram, it is very easy to measure this clearance.

1. Install the clutch and flywheel to engine and then install the Bell Housing.
2. Measure the distance from the mating flange of the Bell Housing to the tips of the diaphragm fingers.
3. With the hydraulic slave bolted to the torque tube (C6 and 2010+ Camaro's require a RPS bearing adaptor) open the bleeder valve and push the bearing all the way down (bottom out the slave).
4. Measure from the face of the bottomed out throw-out bearing to the face of the torque tube mating flange.
5. Subtract the number found in #4 from the number found in #2. This is your finger height clearance.
6. If for any reason the clearance is less than .275" than RPS can supply you with a universal bearing adaptor that is used with a ZR1 (not C6 Z06) hydraulic slave. This combination allows you to take your measurements and then cut the universal adaptor to fit your car perfectly.